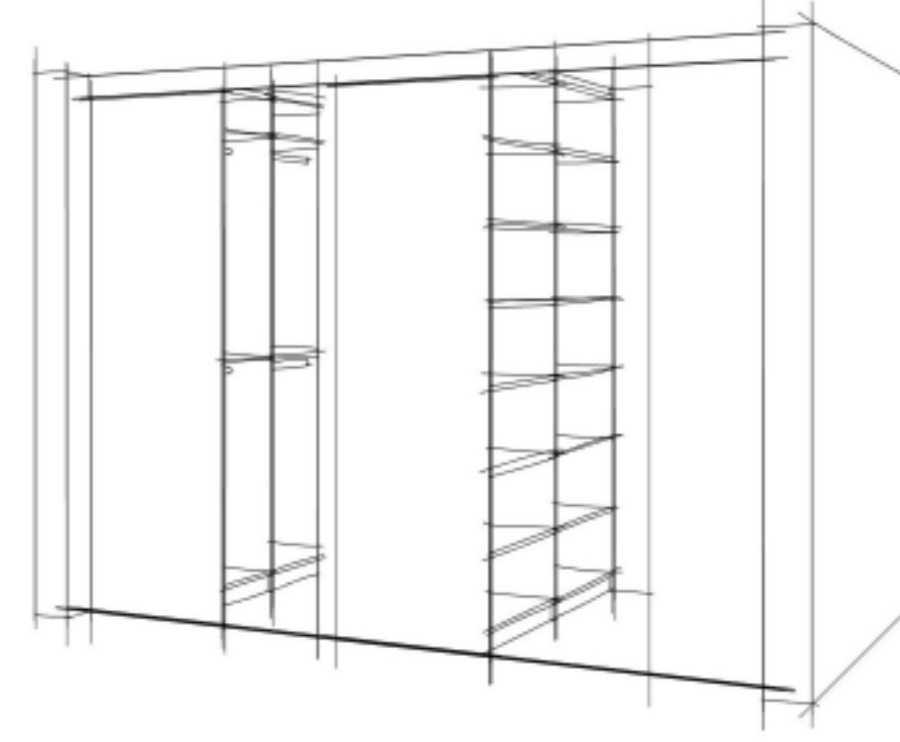
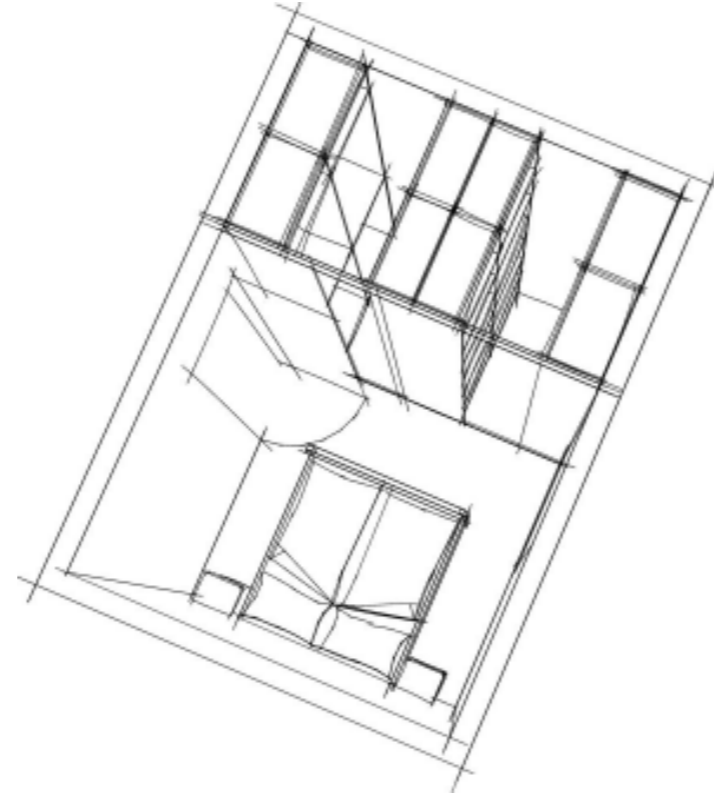
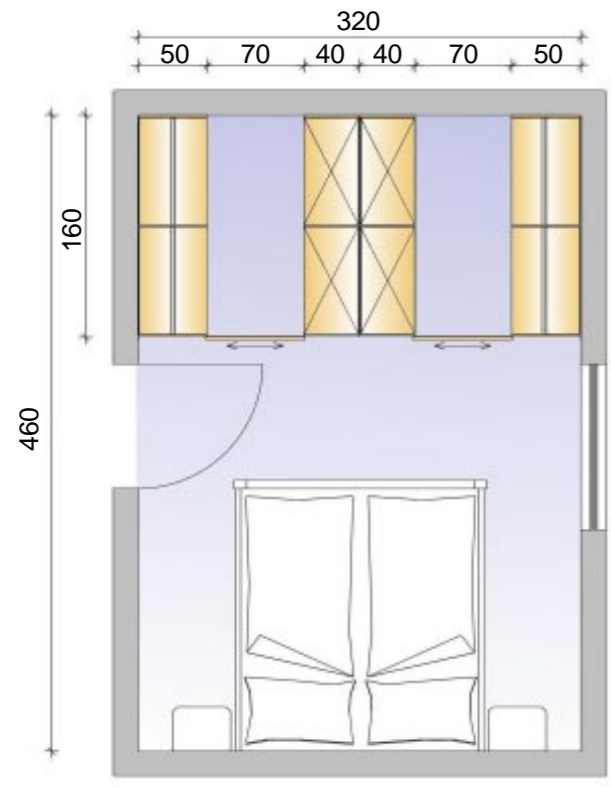


# Begehbare Schränke

## Varianten und Maßbeispiele

## Schrankvarianten

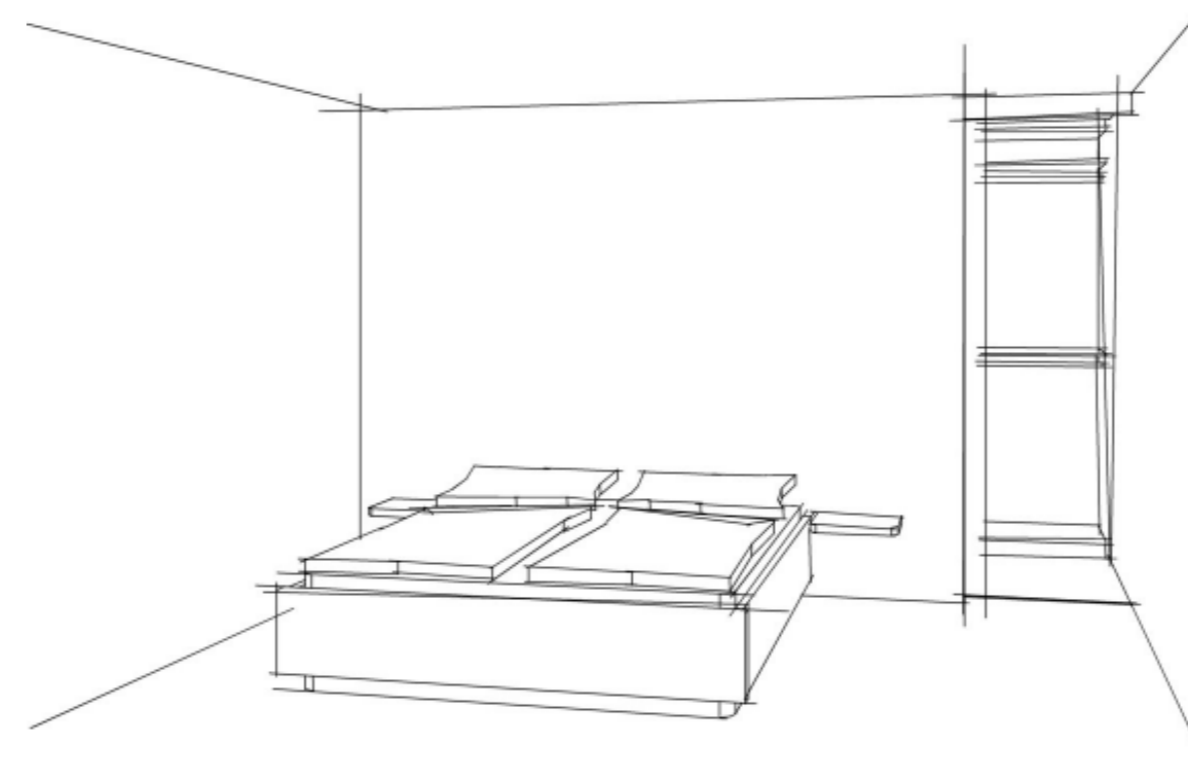
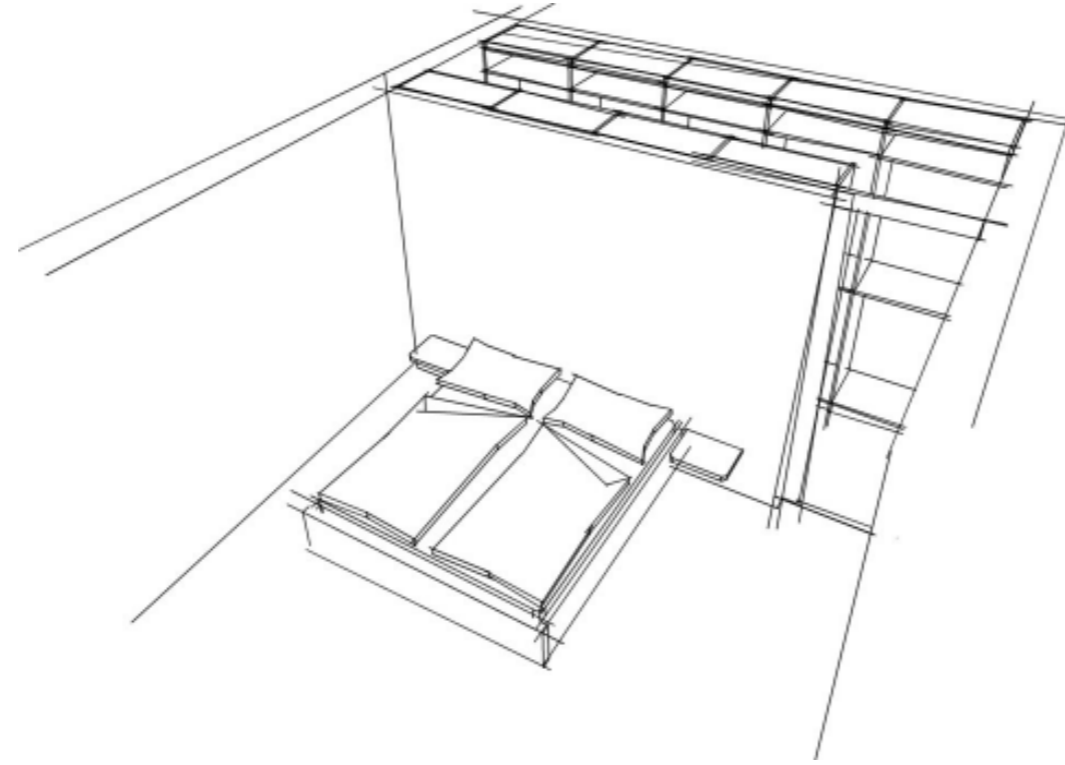
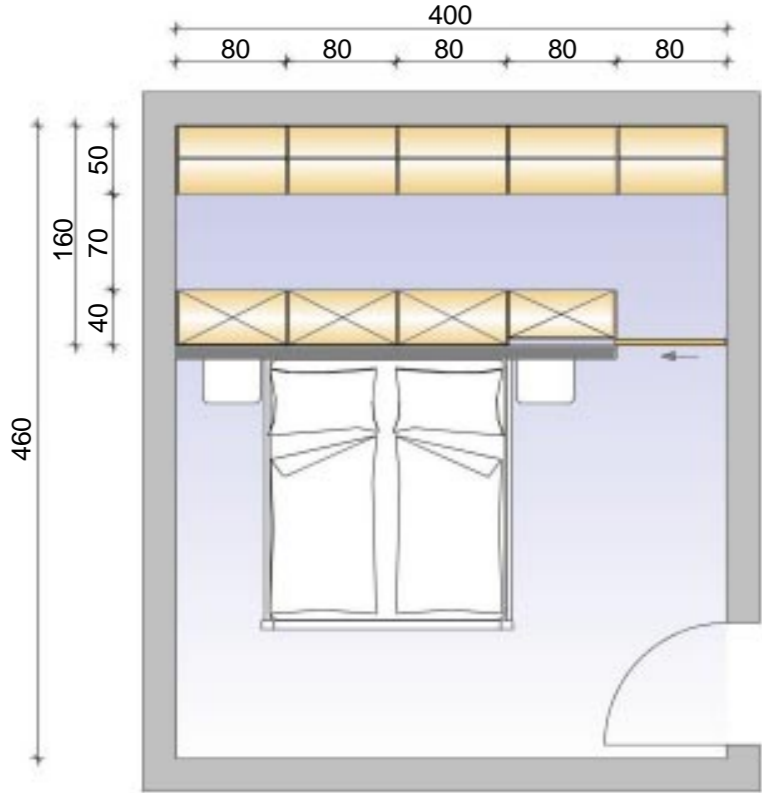
■ Variante 1



- besonders geeignet für ...
- Schranklänge + Grundfläche

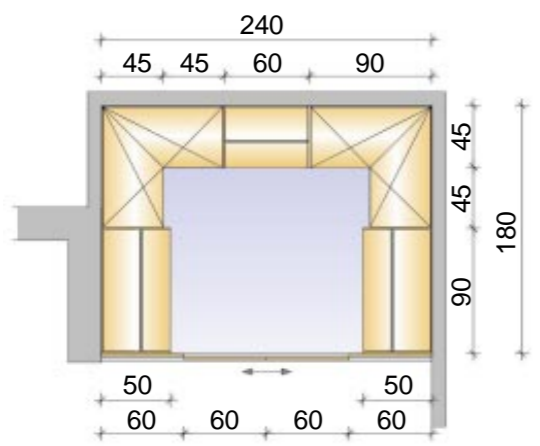
- schmale, tiefe Räume
- 6,4 lfm / 5 m<sup>2</sup>

■ Variante 2



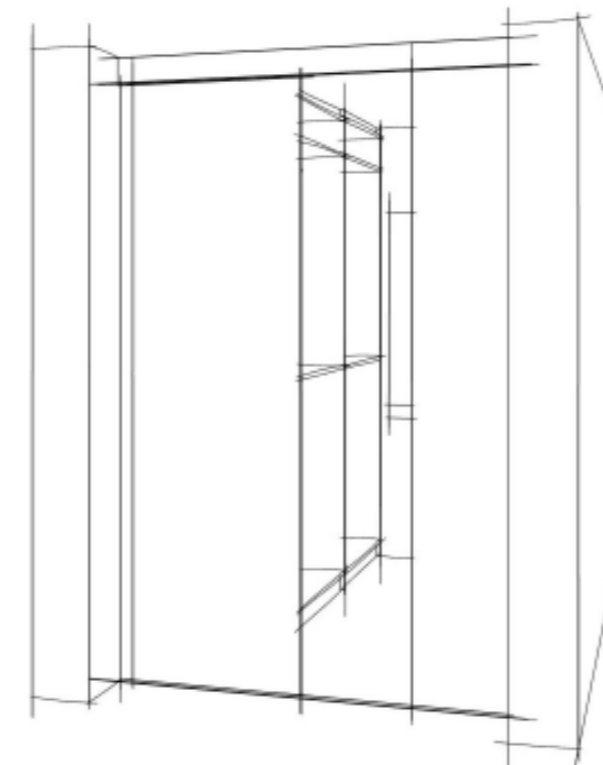
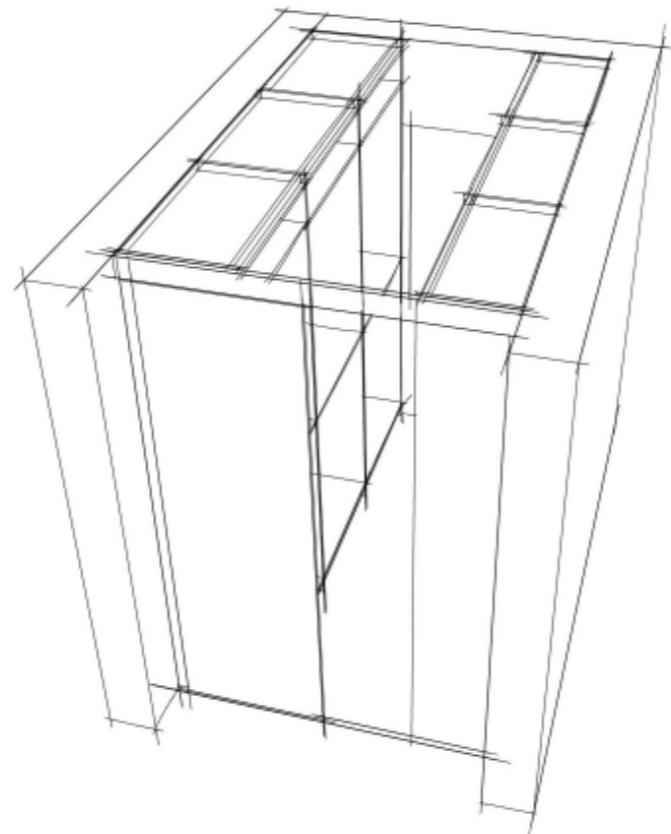
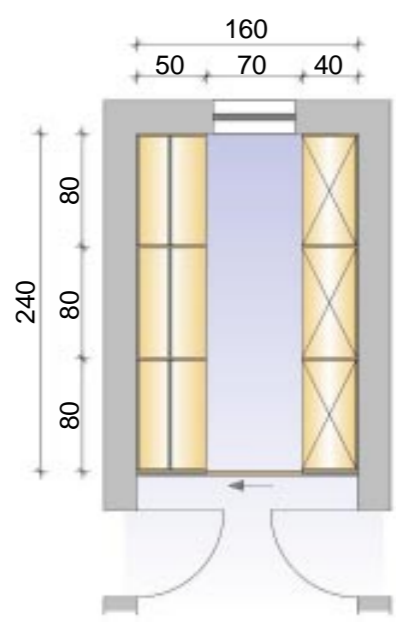
- ruhige, schlichte Räume
- 7,2 lfm / 6,8 m<sup>2</sup>

■ Variante 3



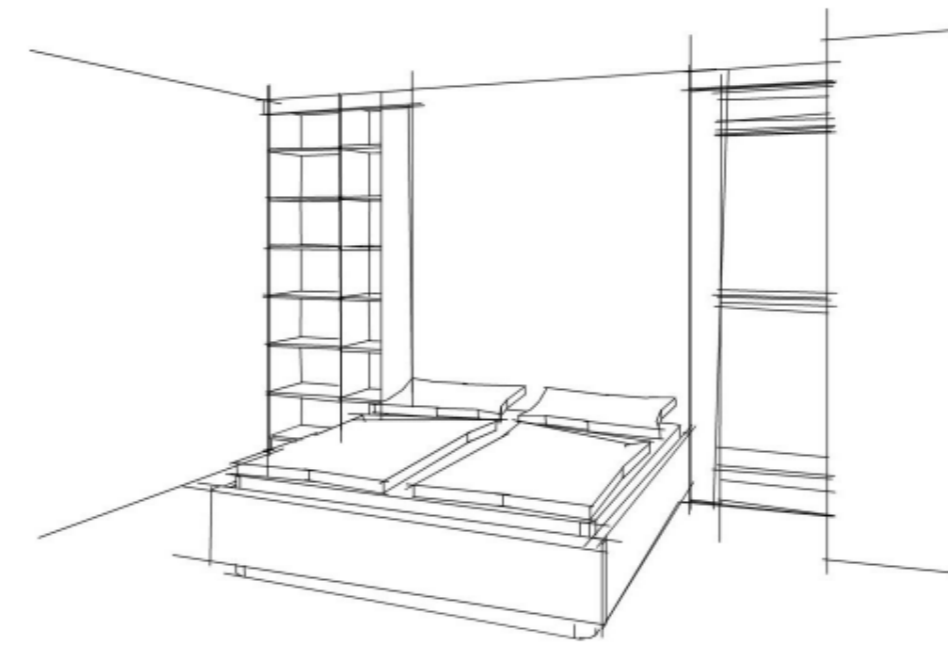
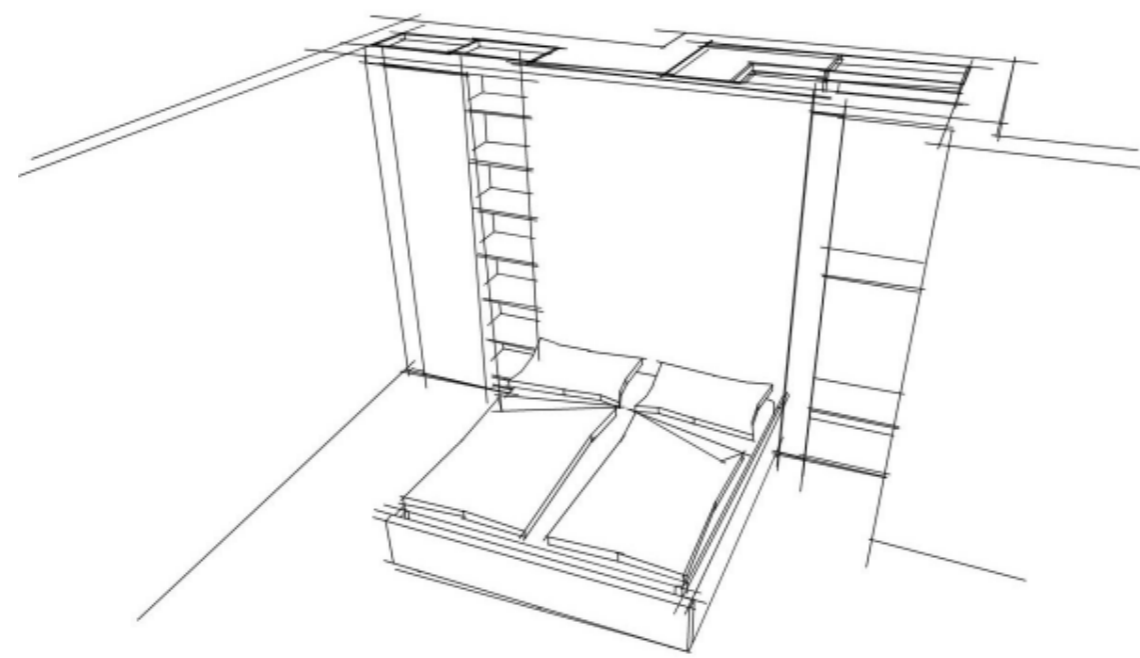
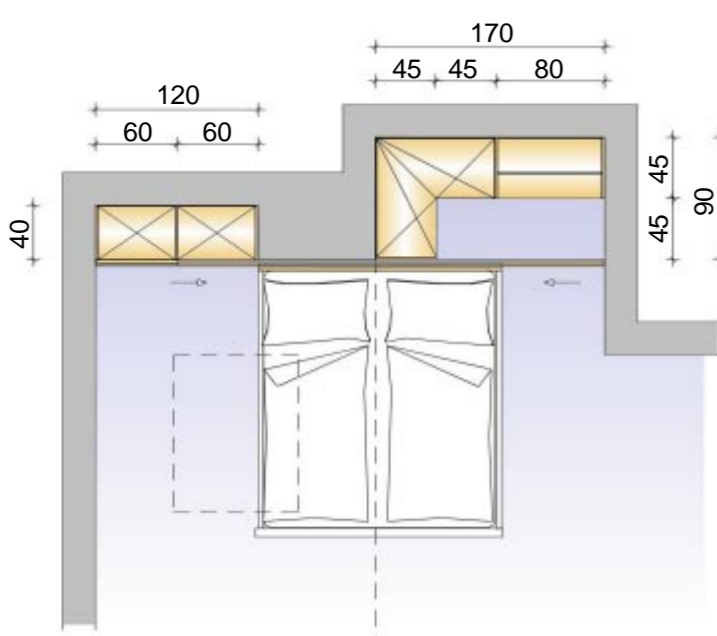
- große Nischen
- 5,4 lfm / 5,7 m<sup>2</sup>

■ Variante 4



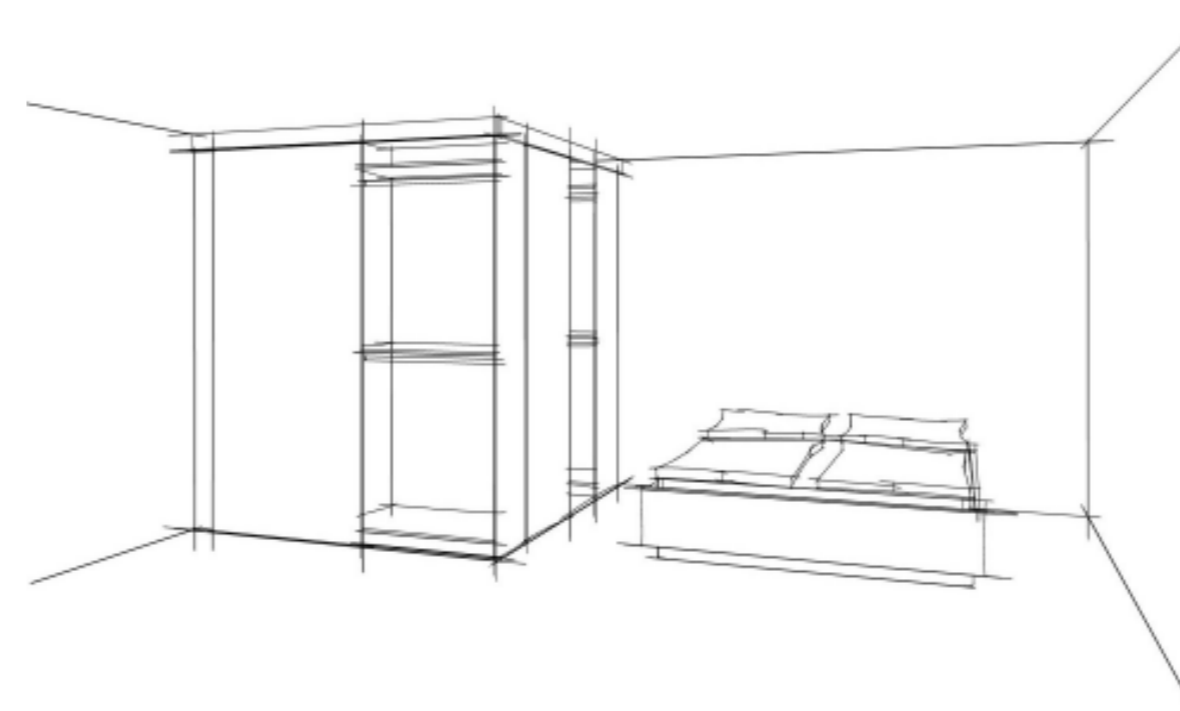
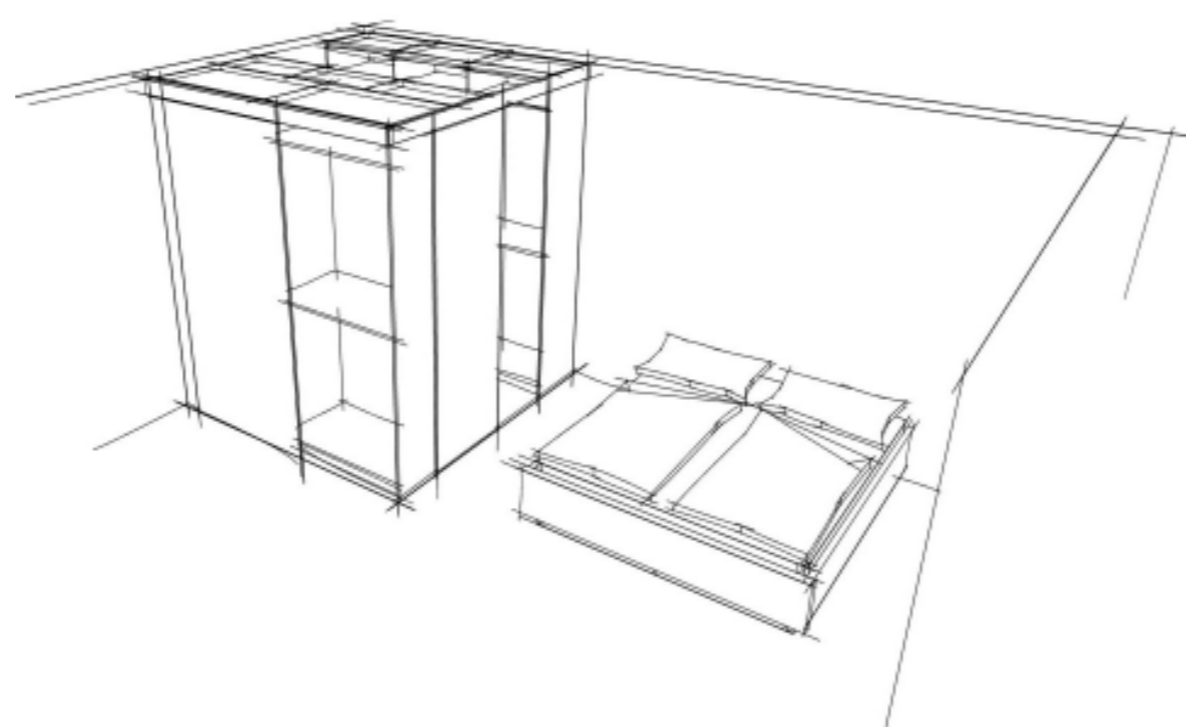
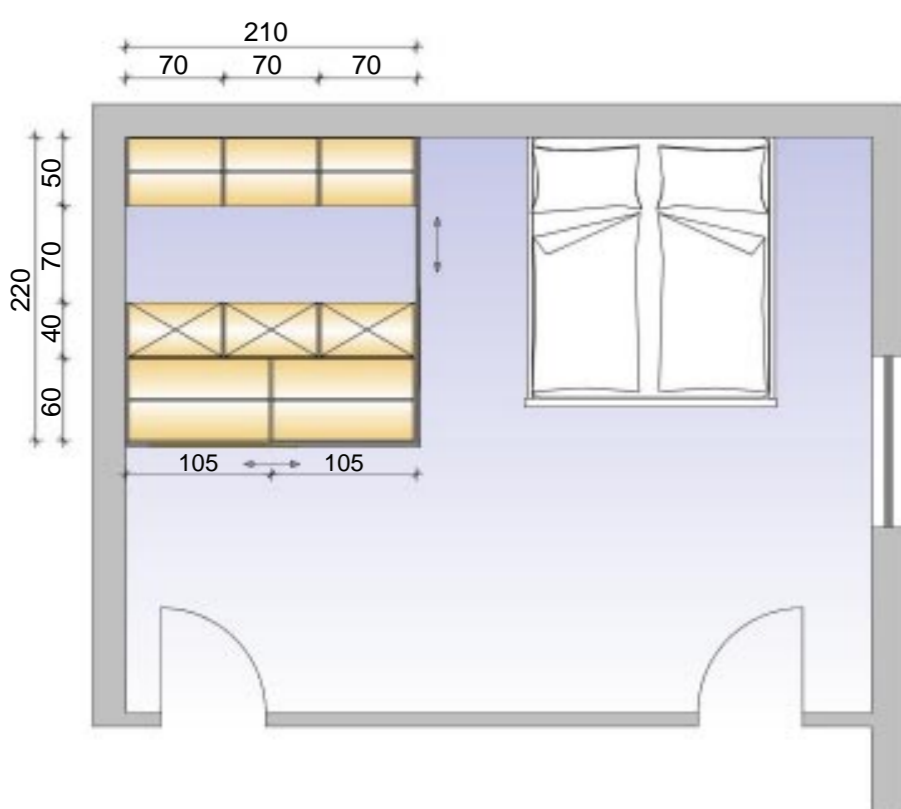
- kleine Räume, Flure
- 6,4 lfm / 5,1 m<sup>2</sup>

■ Variante 5



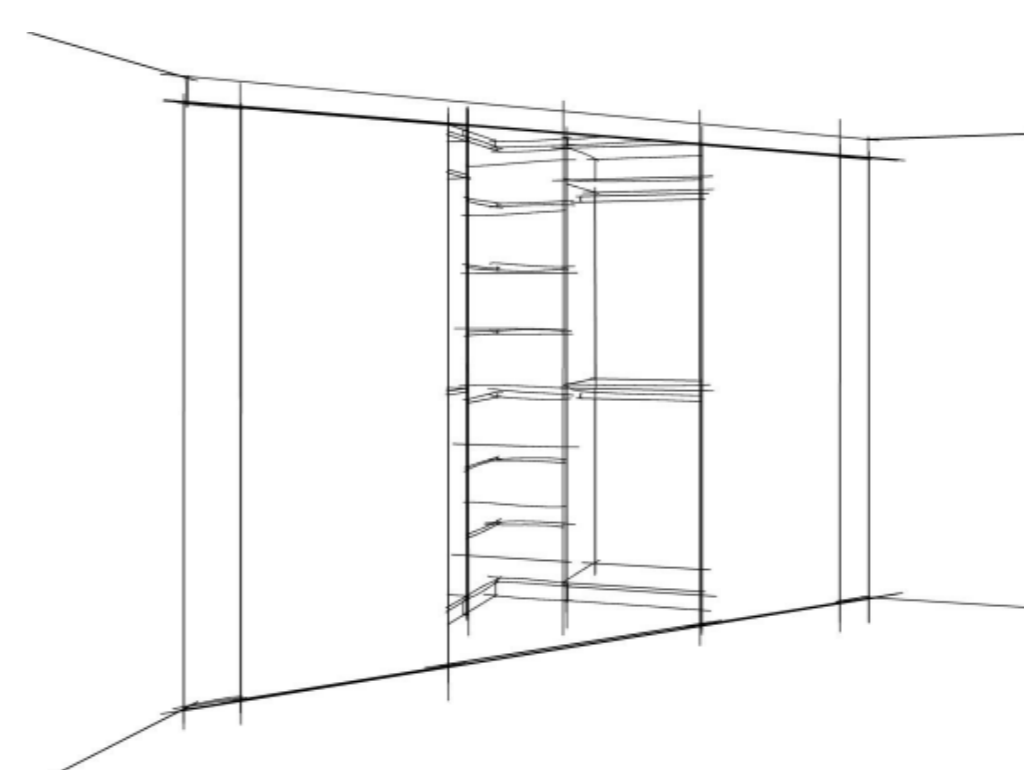
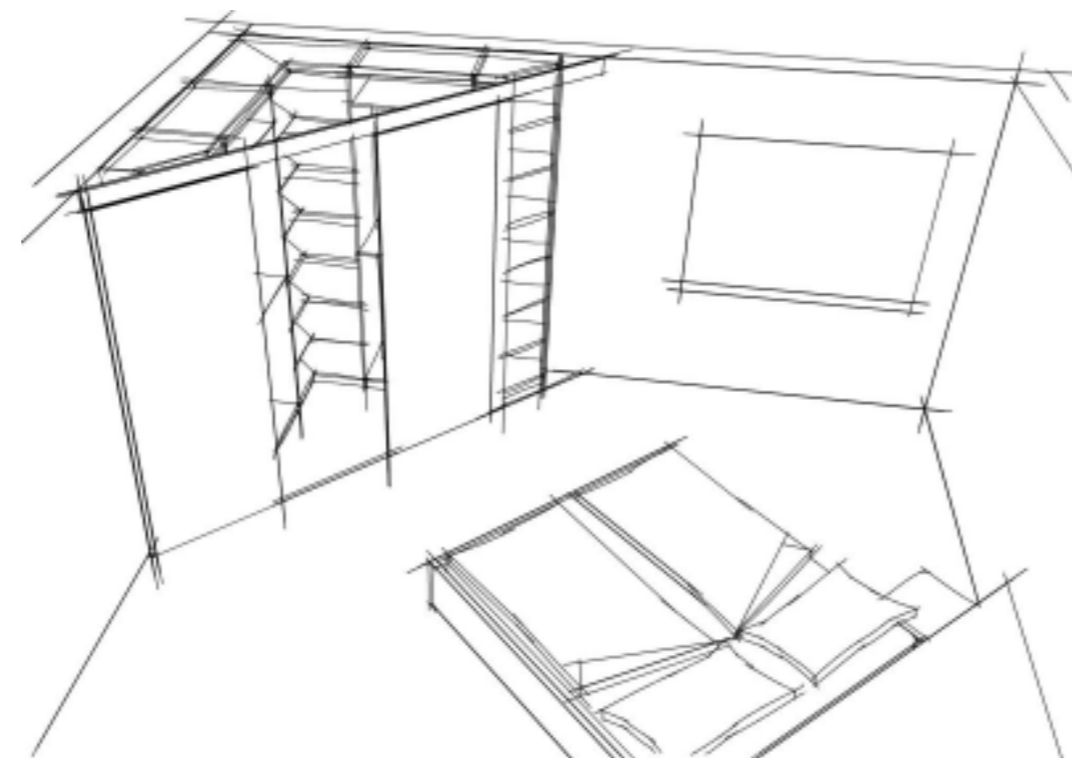
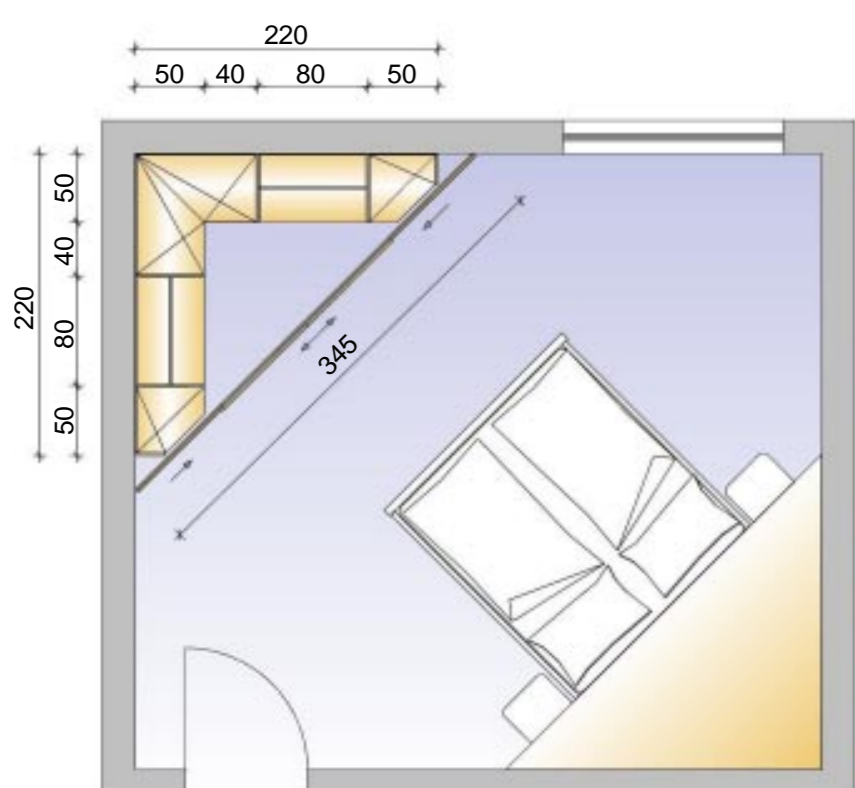
- Ecken und Vorsprünge
- verschieden

■ Variante 6



- große Räume
- 6 lfm / 4,4 m<sup>2</sup>

■ Variante 7



- neue Aufteilung von Räumen
- 4 lfm / 2,4 m<sup>2</sup>